

CRITICAL THINKING IN THE PRACTICUM COURSES: INTENTIONAL CAREER PLANNING

Mary Olle and Tara Newman,
Stephen F. Austin State University

FCSTAT, August 1, 2012
Dallas, Texas



COPYRIGHT

- ◉ **Copyright © Texas Education Agency, 2012.** These Materials are copyrighted © and trademarked ™ as the property of the Texas Education Agency (TEA) and may not be reproduced without the express written permission of TEA, except under the following conditions:
- ◉ 1) Texas public school districts, charter schools, and Education Service Centers may reproduce and use copies of the Materials and Related Materials for the districts' and schools' educational use without obtaining permission from TEA.
- ◉ 2) Residents of the state of Texas may reproduce and use copies of the Materials and Related Materials for individual personal use only, without obtaining written permission of TEA.
- ◉ 3) Any portion reproduced must be reproduced in its entirety and remain unedited, unaltered and unchanged in any way.
- ◉ 4) No monetary charge can be made for the reproduced materials or any document containing them; however, a reasonable charge to cover only the cost of reproduction and distribution may be charged.
- ◉ Private entities or persons located in Texas that are **not** Texas public school districts, Texas Education Service Centers, or Texas charter schools or any entity, whether public or private, educational or non-educational, located **outside the state of Texas** **MUST** obtain written approval from TEA and will be required to enter into a license agreement that may involve the payment of a licensing fee or a royalty.
- ◉ For information contact: Office of Copyrights, Trademarks, License Agreements, and Royalties, Texas Education Agency, 1701 N. Congress Ave., Austin, TX 78701-1494; phone 512-463-7004; email: copyrights@tea.state.tx.us.



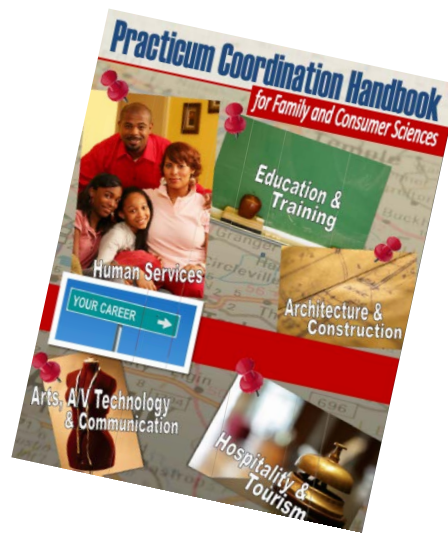
Provides FREE instructional resources

- Education and Training
- Hospitality and Tourism
- Human Services

<http://cte.sfasu.edu/>

CAREER PREPARATION/PRACTICUM CROSSWALK

- All programs of study culminate in a practicum course



Practicum Coordination Handbook for FCS:

<http://cte.sfasu.edu/wp-content/uploads/2011/12/Practicum-Coordination-Handbook.pdf>

ADVANTAGES TO PRACTICUM COURSES

For schools and communities:

- Provide training without expense of purchasing equipment used in the various occupations
- Helps meet needs for trained employees in the community
- Establish good community relations and provides opportunities to work in partnership to promote educational goals

For Students:

- Provides opportunities for students to receive hands-on, work-based training,
- Gives valuable career experience prior to high school graduation
- Develops occupational knowledge and skills



WHY CRITICAL THINKING?



- Practicum TEKS specifically state and/or imply the need for developing critical thinking skills.
 - For example: The student uses oral and written communication skills and solves problems using critical-thinking skills (Human Services).

WHAT IS CRITICAL THINKING?

At your table, generate a definition of critical thinking.

When you have your definition, designate a group member to write the definition on your chart paper and post at the front of the room.

You will have 3-5 minutes for this activity.



GROUP SHARE

What are the common elements for each definition?

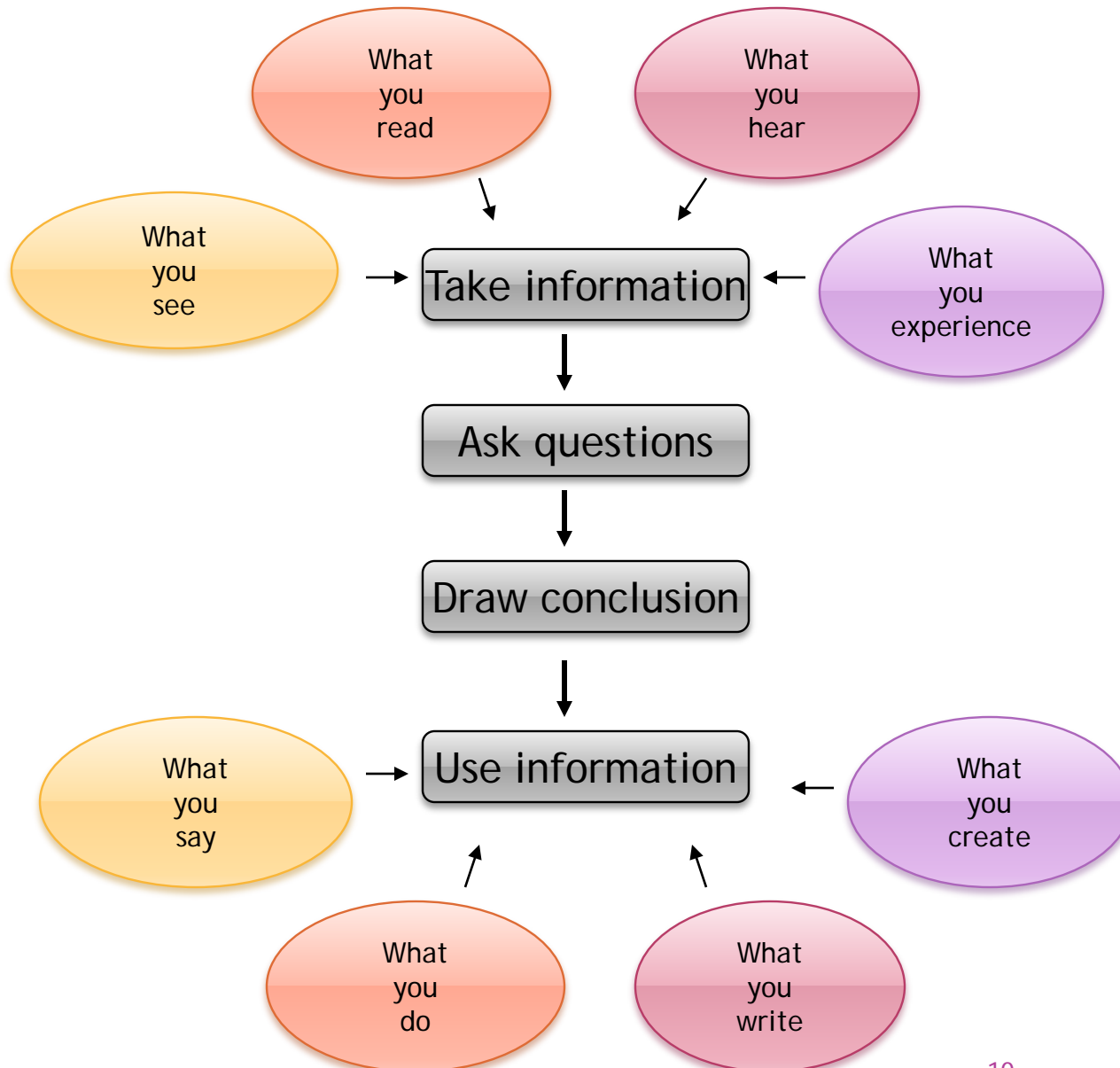


BLOOM'S TAXONOMY

- ◉ Knowledge
- ◉ Comprehension
- ◉ Application
- ◉ Analysis
- ◉ Synthesis
- ◉ Evaluation



CRITICAL THINKING



POSSIBLE STRATEGIES

- Collaborative Projects
 - Preparing for a Successful Practicum Experience (advice to freshmen?)
- Creating Organizational Handbooks
 - Ethical guidelines
 - Work safety procedures
- Transfer of Knowledge
 - Conducting a presentation to community clients



ACTIVITY CREATION

- Using the template provided, create a sketch of an activity you can implement in your practicum course.
- Pay attention to:
 - Components of Critical Thinking;
 - Communication Skills (oral and/or written); and
 - Authentic Problem Solving.



FOR MORE INFORMATION

Statewide Instructional Resources Development Center
Free Instructional Resources for Education and Training,
Hospitality and Tourism, and Human Services

www.cte.sfasu.edu



Enjoy the conference!

CONTACT INFORMATION

- Mary Olle

Stephen F. Austin State University

ollemary@sfasu.edu

- Tara Newman,

Stephen F. Austin State University

tanewman@sfasu.edu